

Return of Experience



FANC December 2022



The truth nothing but the truth, I swear !

Disclaimer: This is my personal view of the situation. This does not involve the CHU UCL Namur. Destine Michel



CHU UCL Namur asbl

Dinant : rue Saint-Jacques, 501 • 5500 Dinant • Belgique • Tél. : +32 (0)82 21 24 11

Godinne : avenue Docteur G. Thérasse, 1 • 5530 Yvoir • Belgique • Tél. : +32 (0)81 42 21 11

Sainte-Elisabeth : place L. Godin, 15 • 5000 Namur • Belgique • Tél. : +32 (0)81 72 04 11

www.chuucnamur.be

Dénomination de l'institution, de ses sites hospitaliers et des entités membres de son réseau intégré de soins et de services

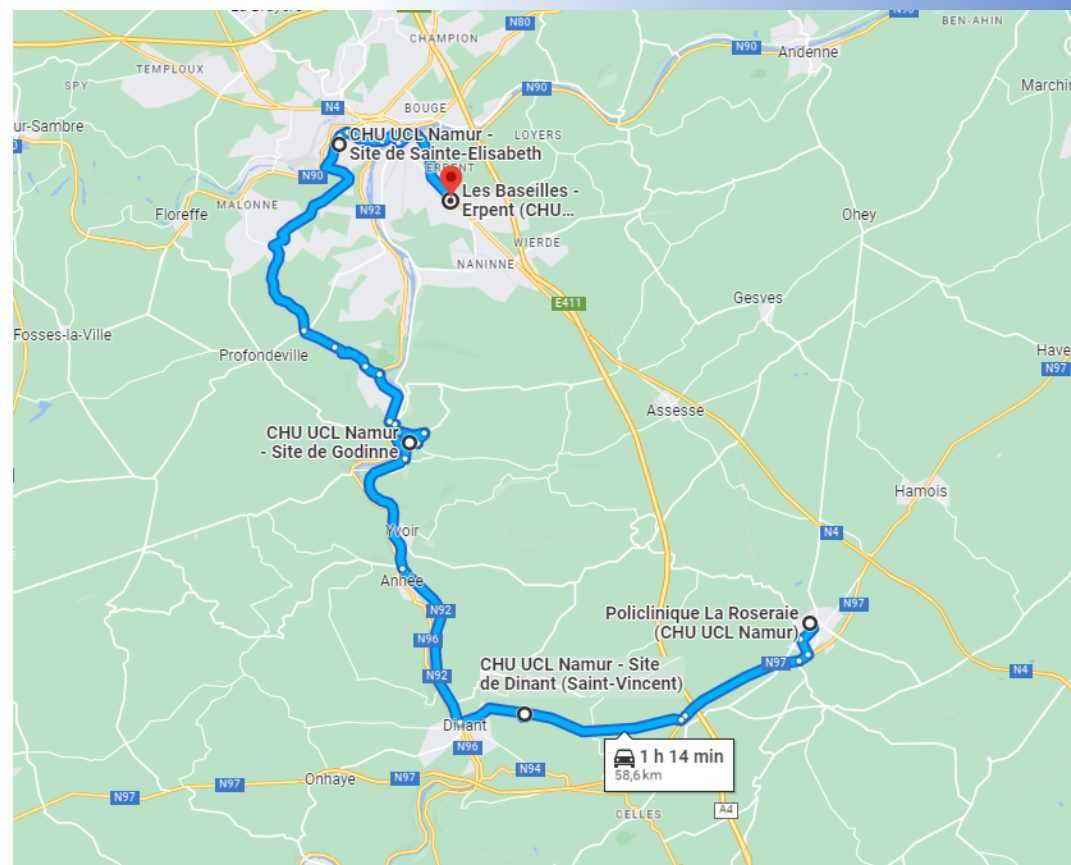
- CHU UCL Namur
- CHU UCL Namur – Site de Dinant
- CHU UCL Namur – Site de Godinne
- CHU UCL Namur – Site de Sainte-Elisabeth

- Foyer Saint-François – Centre de soins palliatifs (Namur)

- Centre médical Les Baseilles (Erpent)
- Centre de Médecine spécialisée (Erpent)
- Polyclinique La Roseraie (Ciney)
- Pôle Médical de la Pointe (Givet – France)

- Résidence Alégria (Lustin)
- Résidence Les Lauriers (Namur – La Plante)
- Résidence Saint-Thomas de Villeneuve (Lustin)
- Résidence Sainte-Anne (Dinant)

- Crèche Le Village des Enfants (Yvoir)
- Crèche Les Pommes d'Amour (Dinant)



- Radiotherapy
 - 4 Linacs
 - HDR
 - Contacttherapy
- 3 Nuclear Medicine departments
 - Shared PET-CT
 - Iodine chambers
 - Metabolic Therapies
- RX : more than 100.
 - From simple to interventional medicine



Radiophysicists team

- Radiotherapy :

(too volatile) now 6 5 4 3 4 wish 7

One extra for consultancy / help.

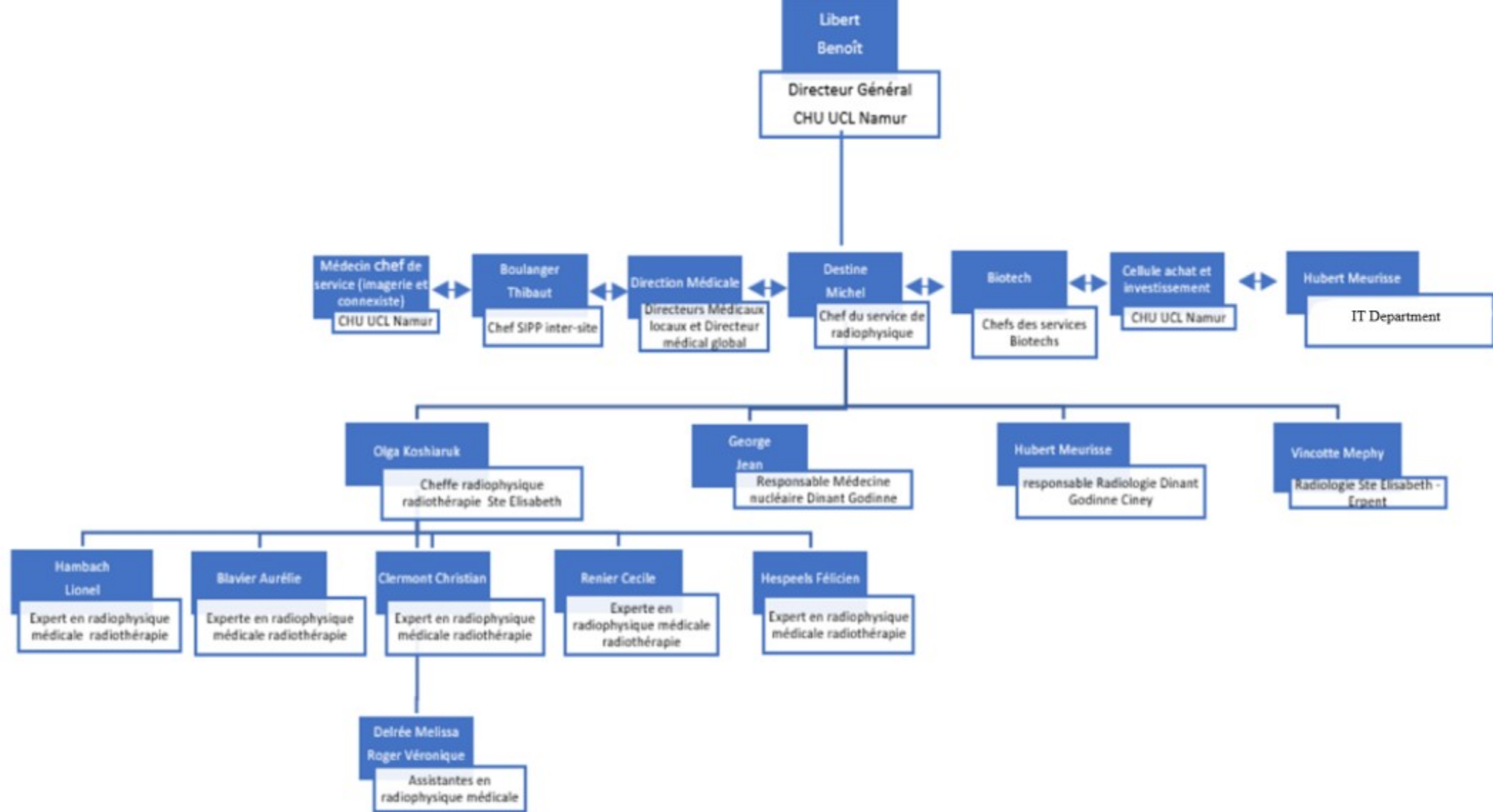
PMA: 2 1

- Nuclear Medicine: 3 recognized

- Radiology : 1 recognized (from the Nuclear Medicine staff)

External Controlatom (mammotest)





Lien fonctionnel



CHU
UCL
NAMUR



MEMBRE DU
RÉSEAU HOSPITALIER NAMUROIS

Pitfalls and success

Multi-site issue :

- Persuade managers

Message(s) in a bottle to the FANC (thank you !)

- Explain the idea of the law
- Hierarchy
- Informations about systems and system information
- Resource monitoring / tracking
- Turnover in the different departments (purchasing and supplies department, head (medical) of department for 5 years, The Big Quit)
- Very recently : money



Things that make my life easier

- One internal service for prevention and protection at work.
Green-red flag for new material- communication - Letter for release
- One external Physical inspection establishment
- Many (too ?) internal communications tools
- External radiophysics service
- Goodwill of colleagues



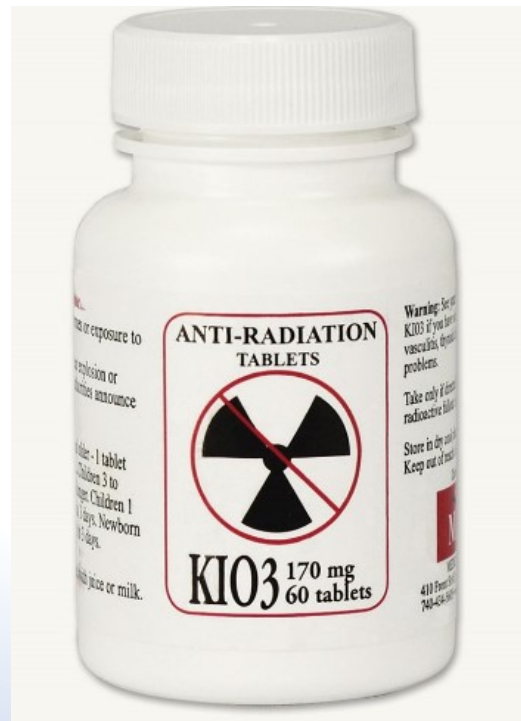
DEMO SYSTEMS : A nightmare !

- Don't forget to update the list of devices according to the FANC license.
 - Optionally shut down an (same) existing system.
 - Radioprotection and Physicist.
-
- They appear for testing or for replacement during a repair and sometimes never leave again.



Sometimes it goes smoothly :

- Phone call for an iodine problem...
- This proves the communication worked.



What next ?

Many things to do:

Optimisations ok but multi-sites ...

Communication

Real time actions

A sign of the end

A red rectangular sign with rounded corners, containing the text "THE END" in white, bold, uppercase letters. The sign is supported by two white vertical posts. The background is a solid blue color, and the sign and posts are positioned in the center of the frame.

THE END

Thank you for your attention